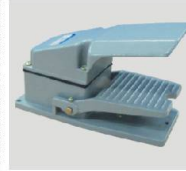


JKK20 小型侧开口电动扣压机

JKK20 Electric Crimper



可选配件Optional


 成品展示Reference
 绝缘子Aluminum arcing-horn


技术参数 TECHNICAL SPECIFICATIONS

扣压力 (kN) Crimping Force	200/20吨(Ton)	扣压范围 (mm) Crimping Range	22以下(≤ 22)	电机功率 (kW) Motor Power	1.1
标准电压 Standard Voltage	380V, 3相(3ph)	可选电压 Optional Voltage	220V	额定油压 (MPa) Oil Pressure	10
开口直径 (mm) Opening	+48	整机重量(kg) Weight Without Oil	115	配套模具 (sets) Dies	2
长 (mm) Length	850	宽 (mm) Width	310	高 (mm) Height	870

特点 PERFORMANCE

- 电器元件专用，微型 侧面开口 Mobile style, it is designed for electrical components, opening from single side.
- 能扣压异型铝合金套管 It is the ideal for aluminum complicated fittings.
- 不受接头形状限制 No limitation for fitting's shape.
- 模具仅做径向运动 Only radial movement of the dies.
- 接头总成可以从侧面开口处进出 Inserting and taking the hoses fittings through the single side.

适应产品范围 APPLICABLE PRODUCT RANGE

名称 Fitting	规格 (mm) Specifications
铝合金套筒 Aluminum tube ends	直径(Diameter) 20 长(Length)12
铝合金套筒 Aluminum tube ends	直径(Diameter) 22 长(Length)12